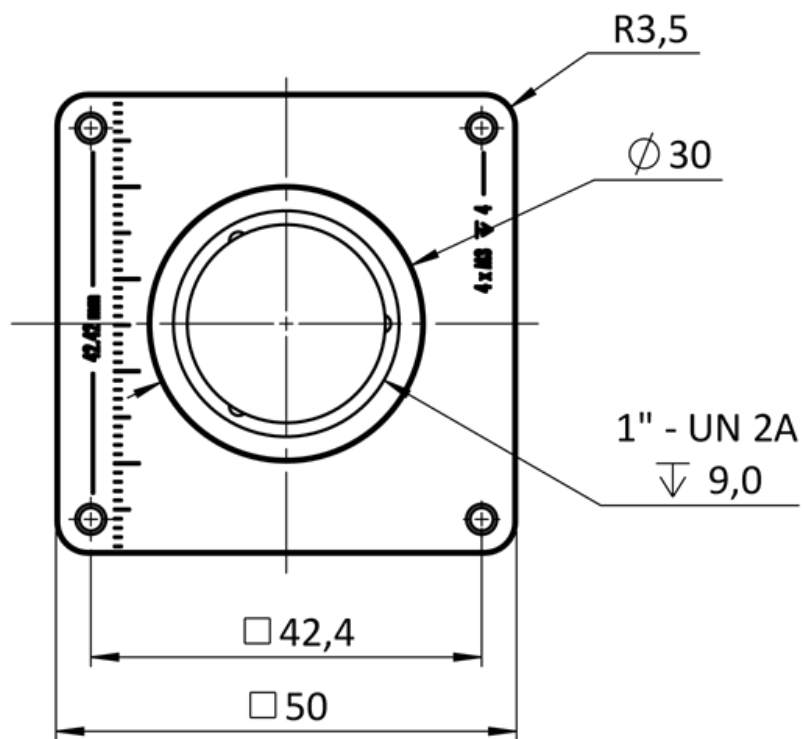


SVS-Vistek exo253ZGE Technical Drawings

front



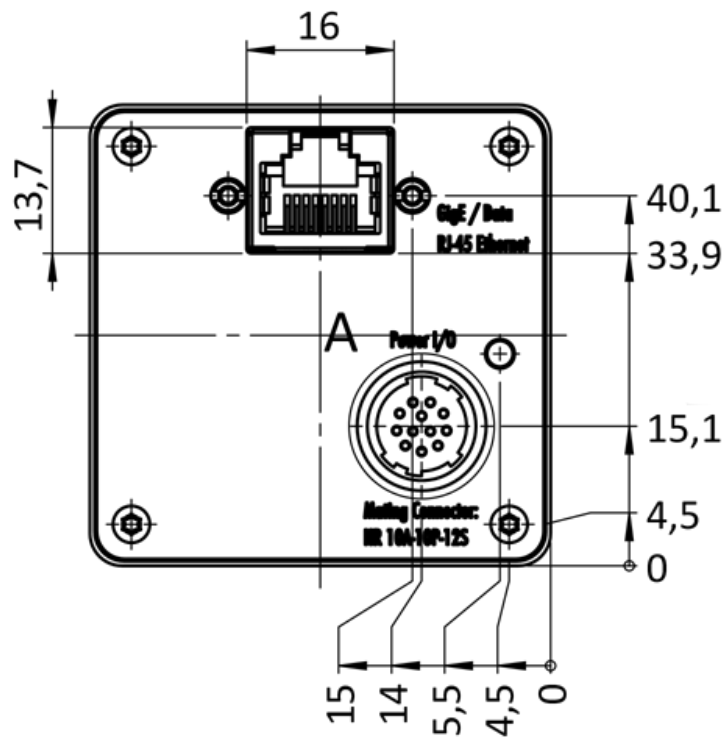
1stVision, Inc.

40 Shattuck Road, Suite 227
Andover, MA 01810

Office 978-474-0044 / West Coast 949-361-0350 / Canada 519-963-4800

SVS-Vistek exo253ZGE Technical Drawings

back



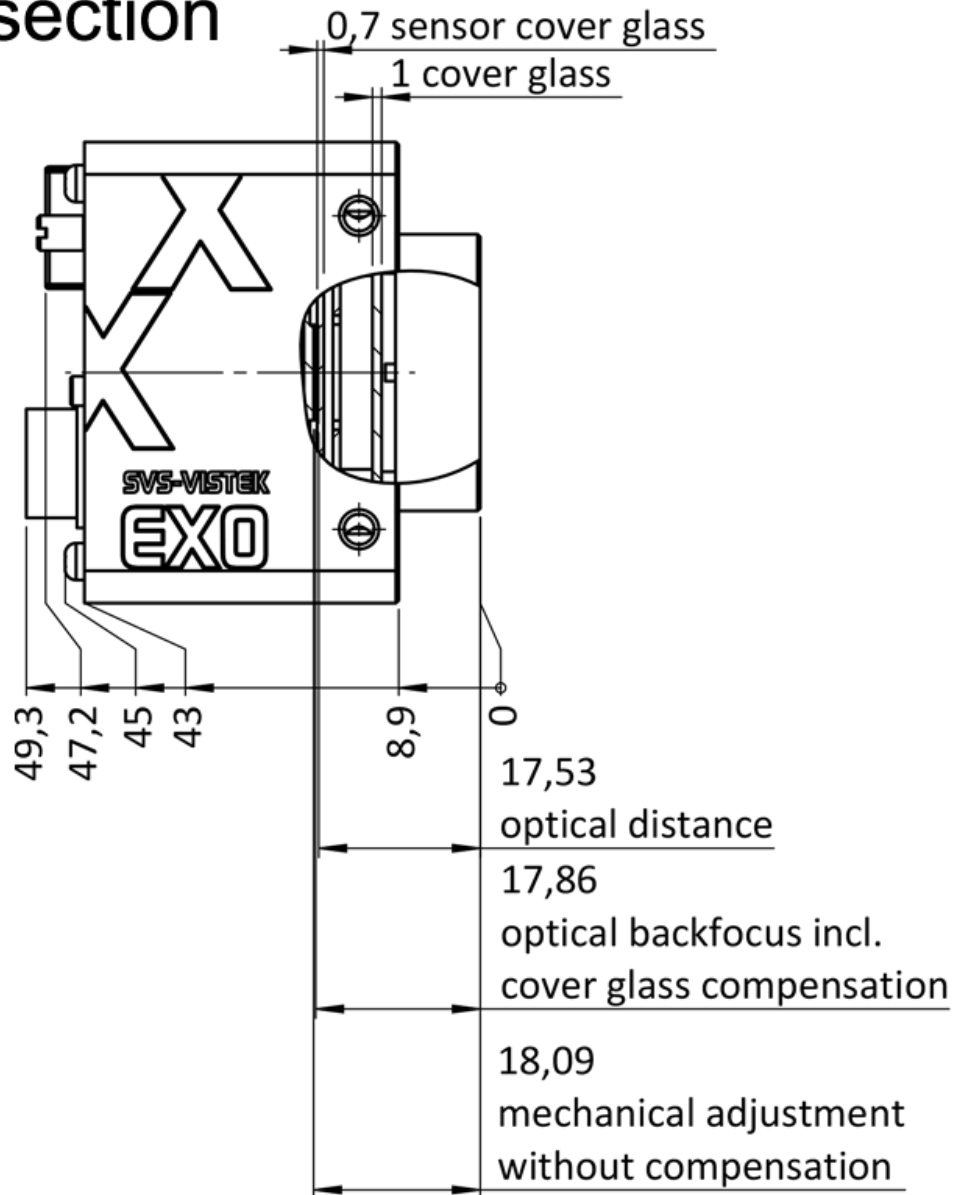
1stVision, Inc.

40 Shattuck Road, Suite 227
Andover, MA 01810

Office 978-474-0044 / West Coast 949-361-0350 / Canada 519-963-4800

SVS-Vistek exo253ZGE Technical Drawings

cross section



1stVision, Inc.

40 Shattuck Road, Suite 227
Andover, MA 01810

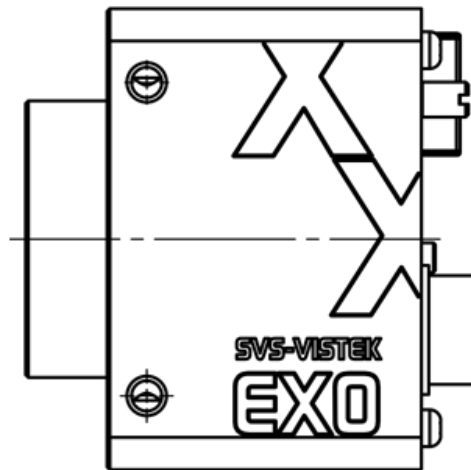
Office 978-474-0044 / West Coast 949-361-0350 / Canada 519-963-4800



SVS-Vistek exo253ZGE Technical Drawings

right side

right view



1stVision, Inc.

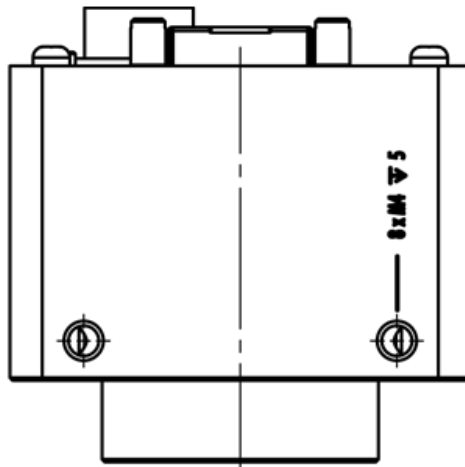
40 Shattuck Road, Suite 227
Andover, MA 01810

Office 978-474-0044 / West Coast 949-361-0350 / Canada 519-963-4800



SVS-Vistek exo253ZGE Technical Drawings

top



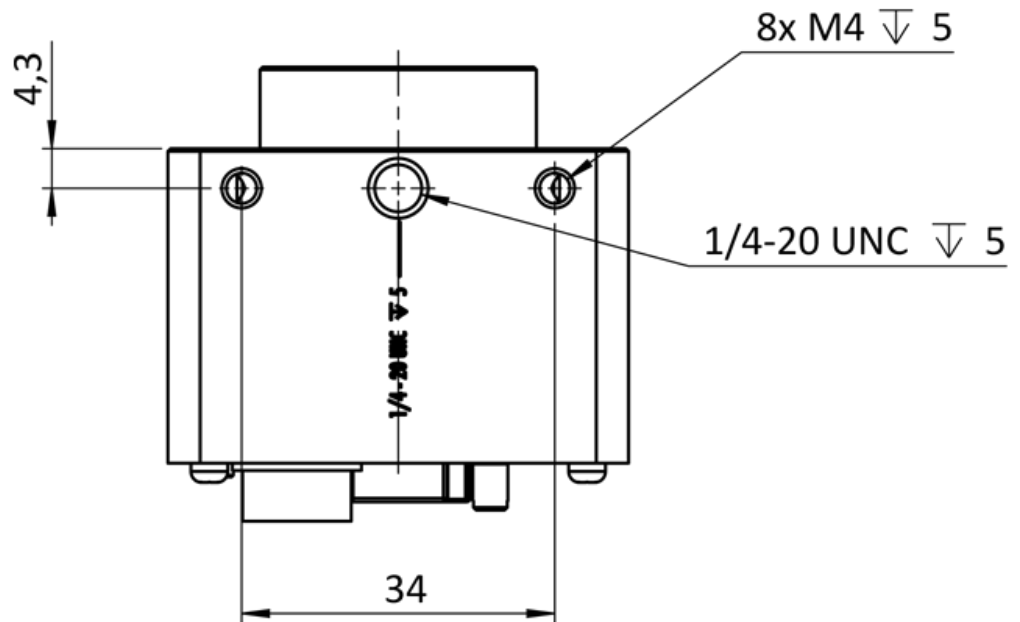
1stVision, Inc.

40 Shattuck Road, Suite 227
Andover, MA 01810

Office 978-474-0044 / West Coast 949-361-0350 / Canada 519-963-4800

SVS-Vistek exo253ZGE Technical Drawings

bottom



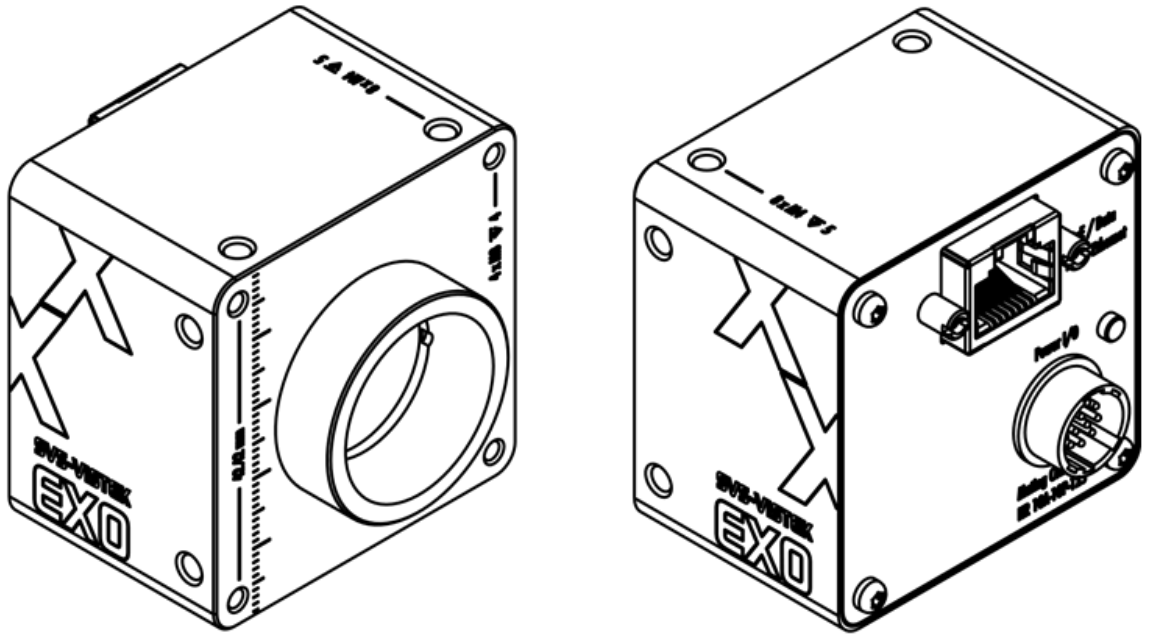
1stVision, Inc.

40 Shattuck Road, Suite 227
Andover, MA 01810

Office 978-474-0044 / West Coast 949-361-0350 / Canada 519-963-4800

SVS-Vistek exo253ZGE Technical Drawings

3D



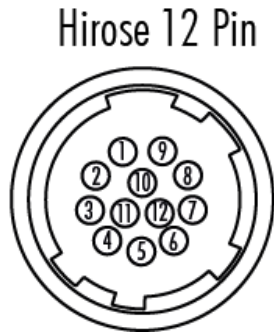
1stVision, Inc.

40 Shattuck Road, Suite 227
Andover, MA 01810

Office 978-474-0044 / West Coast 949-361-0350 / Canada 519-963-4800

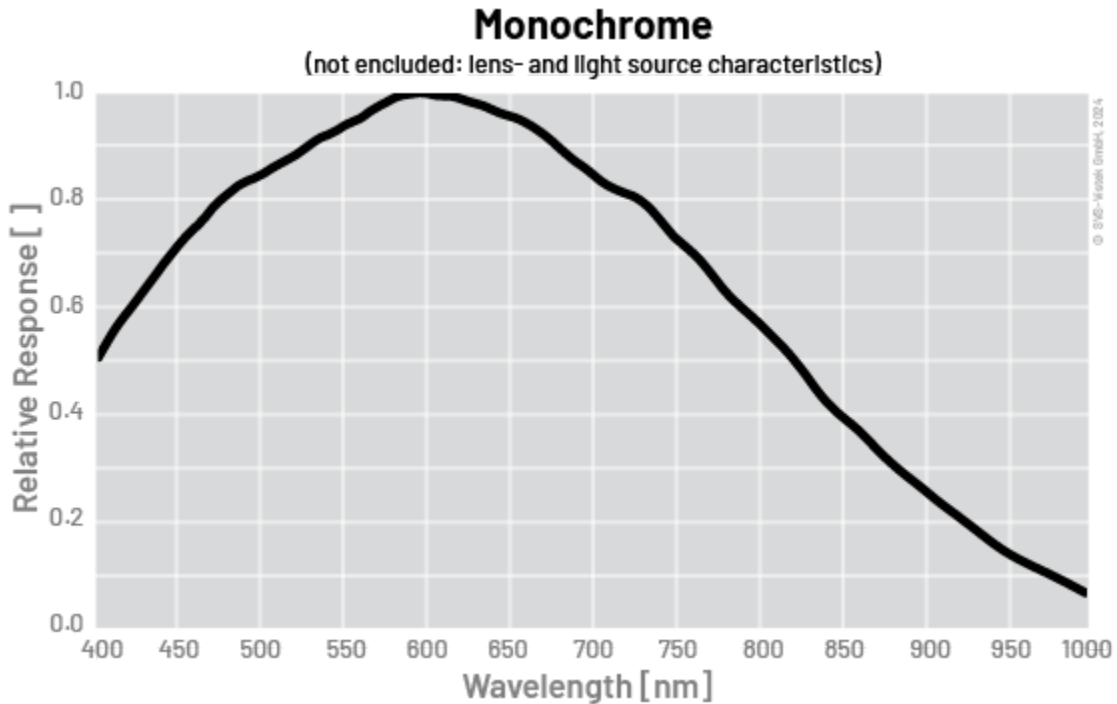
SVS-Vistek exo253ZGE Technical Drawings

Pinout Mating Connector



1	VIN -	(GND)	7	OUT 1	(open drain)
2	VIN +	(10 V to 25 V DC)	8	OUT 2	(open drain)
3	IN 4	(RXD RS232)	9	IN 3 +	(opto In +)
4	OUT 4	(TXD RS232)	10	IN 3 -	(opto In -)
5	IN 1	(0-24V)	11	OUT 3	(open drain)
6	IN 2	(0-24V)	12	OUT 0	(open drain)

Spectral Response – excludes camera cover- or IR-cut filter characteristics



1stVision, Inc.

40 Shattuck Road, Suite 227
Andover, MA 01810

Office 978-474-0044 / West Coast 949-361-0350 / Canada 519-963-4800